

Oral cancer recognition toolkit CRUK/BDA/RCGP

Mick Armstrong

Chair

British Dental Association

Early detection of oral cancer

- Detection at stage I/II improves survival to ~90%, cf. <50% survival for detection at stage III/IV.
- UK lags behind comparable countries in oral cancer survival.
- Toolkit developed by CRUK in partnership with BDA and RCGP to help GPs and dentists with early detection and referral.

Online toolkit

- Covers risk factors, signs/symptoms and how to respond/refer.
- Features:
 - detailed image library
 - referral guide (for each UK nation)
 - case studies
 - video demonstrations of patient examination.

Online toolkit

Oral Cancer Recognition Toolkit



CANCER
RESEARCH
UK

BDA
British Dental Association

[HOME](#) [REFERRAL DECISION GUIDE](#) [LESION RECOGNITION RESOURCE](#) [EXAMINATION VIDEO](#)

Improve your knowledge of the **prevention** and **detection** of oral cancer, including what to look out for and when and how to respond. This toolkit covers oral and oropharyngeal cancers including lip cancer.

Referral decision guide

This practical tool illustrates the **red flags** which should prompt referral to secondary care via a suspected cancer pathway.

[> View referral decision guide](#)



Patient case studies



To learn more about diagnosing and referring oral cancer, read case studies from **Richard Shaw**, Professor of Head and Neck Surgery, University of Liverpool and Aintree University Hospital NHS Trust.

[> View patient case studies](#)



Test your knowledge

Boost your knowledge of oral cancer and contribute to your CPD with this quiz-based module.

[> Take the quiz](#)



Lesion recognition resource

Browse images and descriptions of different types of lesion.

[> View resource](#)



VIDEO: Oral, head and neck examination

Watch a 3 minute video demonstrating how to perform an examination.

[> Watch the video](#)

Oral cancer risk factors

Some of the risk factors associated with oral cancer include:

- age
- tobacco use (smoking and chewing)
- betel quid (areca nut) use
- alcohol consumption
- human papillomavirus infection
- low fruit and vegetable consumption

[> Resources](#)

Acknowledgements

Cancer Research UK would like to acknowledge the following clinicians for their invaluable input into the development of the Oral Cancer Recognition Toolkit:

Deviation from NICE guidance

- NICE recommends that GPs refer suspected cancer to GDP for further assessment.
- To avoid delays and problems with patients unwilling/unable to attend dentist, the toolkit advises GPs to refer directly to secondary care.

CPD quiz

- 3 hours of verifiable CPD available to dentists via the BDA's CPD Hub.

[CPD Hub Home](#) > [My courses](#) > [Publication-based CPD](#) > [BDA-CRUK Oral Cancer Recognition Toolkit CPD](#)

Oral Cancer Recognition Toolkit



About this CPD quiz

Improve your knowledge of the prevention and detection of oral cancer, including what to look out for and when and how to respond.

This CPD quiz complements the [Oral Cancer Recognition Toolkit](#), developed in partnership with Cancer Research UK and accredited by the Royal College of General Practitioners. The comprehensive toolkit includes a detailed image library, a referral guide, case studies and oral examination videos.

Click on the Start CPD quiz link below to answer 10 multiple-choice questions. Once complete, **3hrs of verifiable CPD will be added to your CPD Record.**

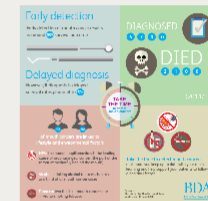
Cancer Research UK has funded the production of this educational quiz. It was written by Carrie Newlands, Consultant Oral and Maxillofacial Surgeon, Royal Surrey County Hospital, Guildford, Surrey. Date of publication: 9th Nov 2015

Learning outcomes:

- Gain an improved understanding of the risk factors for oral cancer
- Have improved confidence in advising patients on the prevention of oral cancer
- Be able to detect a range of suspicious mouth, tonsil, tongue and lip signs, and also neck lumps
- Have increased confidence in referring urgent and non-urgent suspicious cases to secondary care
- Be able to help differentiate between recurrence of malignancy and treatment-related effects

[Start CPD quiz](#)

See our other resources on detecting mouth cancers:



www.bda.org/mouth-cancer